



CI/SfB

Yt3

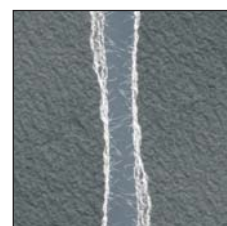
AUGUST 2021
PRODUCT DATA SHEET

ARDEX X 77 S ARDEX X 77 W S

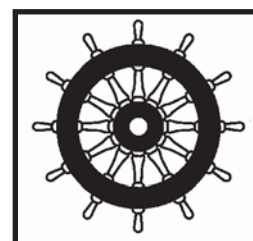
MICROTEC Flexible Ultra Rapid Setting Wall and Floor Tile Adhesive

Features

- MICROTEC fibre reinforcement for high performance
- Ultra rapid setting and hardening – walk on and grout after only 90 minutes
- Advanced slump resistance, double that of 'T' classified adhesives, ideal for fixing large format wall tiles
- Ideal for all tile types including porcelain, fully vitrified, mosaics and terrazzo
- High yield – 5.5m² @ 3mm
- Rapid strength development allows floors to be put back in use and subject to full loads after 24 hours
- Ideal for swimming pools and wet areas
- For internal and external applications
- Suitable for underfloor heating



MICROTEC
fibre reinforced technology



MED Modules B and D approved
as a Surface Material and Floor
Covering with Low Flame Spread
Characteristics



Reg No. FM 01207

EMS 565427

OHS 628374

ARDEX UK LIMITED
Homefield Road, Haverhill, Suffolk CB9 8QP UK.
Telephone: +44 (0)1440 714939
Fax: +44 (0)1440 716640
Email: info@ardex.co.uk
ARDEX online: www.ardex.co.uk

ARDEX X 77 S / ARDEX X 77 W S

MICROTEC Flexible Ultra Rapid Setting

Wall and Floor Tile Adhesive

DESCRIPTION

ARDEX X 77 S and X 77 W S are grey or white, MICROTEC fibre reinforced, ultra rapid setting and hardening, cement-based, floor and wall tile adhesives. Specifically formulated to have enhanced properties of adhesion and flexibility, the advanced slump resistance properties make ARDEX X 77 S and ARDEX X 77 W S ideal for fixing large format wall tiles.

USE

ARDEX X 77 S and ARDEX X 77 W S are ideal for fixing ceramic or fully vitrified tiles and other tiles with low porosity, as well as glass and porcelain mosaics, and terrazzo.

ARDEX X 77 S and ARDEX X 77 W S adhere strongly to most construction materials including concrete, cement and sand renders and screeds, heated sub-floors, brickwork and blockwork, gypsum plaster, plasterboard and existing ceramic tiled surfaces.

The BS EN 12004 C2 FTE S1 designation for ARDEX X 77 S and ARDEX X 77 W S, classify the adhesives as 'Improved fast setting deformable cementitious adhesive with reduced slip and extended open.'

The enhanced setting and hardening performance of ARDEX X 77 S and ARDEX X 77 W S means that after only 24 hours, the adhesive can withstand full loads.

SURFACE PREPARATION

The backgrounds and surfaces to receive the tiles must be clean, firm, free of dust, dirt, oil, grease and other barriers to adhesion, as well as being strong enough to support the weight of the tiles being fixed. Ensure that the background has adequate drying time, as given in the relevant part of BS 5385, and correctly primed, where required, prior to fixing the tiles.

Install tiles in accordance with the relevant parts of BS 5385 and BS 8000 : Part 11 Workmanship on Building Sites. Backgrounds to receive ceramic tiles should be finished to Surface Regularity 1 i.e. so any gap under a 2m straight edge does not exceed 3mm.

ARDEX X 77 S and ARDEX X 77 W S can be applied to dry or moist surfaces, but moisture sensitive materials must be dry and remain dry after fixing.

ARDEX WPC Waterproof Protection System can be used in showers prior to tiling to create a waterproof protective coating that guarantees the prevention of water damage to floors and walls, by protecting moisture sensitive backgrounds in wet locations.

MIXING

ARDEX X 77 S and ARDEX X 77 W S powder is added to clean water in a clean container whilst stirring, and mixed thoroughly to give a slump free, easily worked mortar. The use of an ARDEX mixing paddle with a 10mm chuck, variable speed electric drill makes light work of mixing.

The mix proportions by volume are approximately: 2¾ parts ARDEX X 77 S or ARDEX X 77 W S powder to 1 part water.

A 20kg bag of ARDEX X 77 S or ARDEX X 77 W S requires approximately 6.8 litres of water. DO NOT EXCEED the maximum water content.

The consistency of the adhesive can be adjusted to suit site conditions and the materials being fixed. The mixed adhesive should be applied at temperatures above 5°C. The pot life of the mixed mortar is approximately 30 minutes at 20°C.

APPLICATION

The mixed mortar is applied to the prepared surface with a trowel and then combed through with a suitably sized notched trowel in straight ribs to give a ribbed mortar bed. The tiles should be fixed within the open time of the applied adhesive and pressed into place with a twisting and sliding action to achieve the required contact. For tiling to walls in dry internal locations the adhesive contact should be such that maximum practical contact between the tile and the adhesive is achieved. Tiles with a surface area of less than 0.1 m², but which weigh more per square metre than 70% of the background's capacity to carry the weight, should be solidly bedded. Tiles with a surface area of 0.1 m² or greater, should be solidly bedded.

When tiling to floors, wet areas such as showers and swimming pools, or in external locations achieving a solid bed usually requires the back of the tiles to be buttered immediately prior to placing into the ribbed bed so no voids are left beneath the tiles.

The size of notched trowel chosen depends on the tile size, the surface being tiled, the profile on the back of the tile and the degree of coverage required.

ARDEX X 77 S and ARDEX X 77 W S are classified as having an open time of up to 20 minutes with freshly mixed material, when used in accordance with BS EN 12004. For optimum performance, tiles should be fixed within 20 minutes, and can be adjusted for up to 15 minutes at 20°C.

GROUTING

Grouting can proceed once the tile bed has hardened sufficiently so that the tiles will not be dislodged. When grouting wall tiles, ARDEX X 77 S and ARDEX X 77 W S are normally hard enough after 60 minutes at 20°C, depending on the porosity of the tile and the background.

When grouting floor tiles ARDEX X 77 S and ARDEX X 77 W S are normally hard enough after 90 minutes at 20°C to accept foot traffic depending on the porosity of the tile and the background. Higher temperatures will shorten and lower temperatures will lengthen these times. The tile joints should be grouted with the appropriate ARDEX-FLEX Tile Grout or the appropriate ARDEX Epoxy Grout for areas where chemical resistance and hygienic joints are required i.e. commercial food preparation areas.

ARDEX X 77 S / ARDEX X 77 W S

MICROTEC Flexible Ultra Rapid Setting

Wall and Floor Tile Adhesive

COVERAGE

A 20kg bag of ARDEX X 77 S or ARDEX X 77 W S will yield approximately 16.7 litres of mortar, using approximately 1.2kg of powder per m² per mm thickness of adhesive bed.

The actual coverage achieved in practice will depend on the back profile of the tile and notched trowel and technique used to bed the tiles e.g. a 20kg bag of ARDEX X 77 S or ARDEX X 77 W S will cover approximately 9.5m² when using a 5mm x 5mm square toothed and notched trowel.

PRIMERS

ARDEX P51

Concentrated Water-Based Primer and Bonding Agent for use on absorbent backgrounds, concrete and anhydrite/calcium sulphate screeds prior to the use of ARDEX X 77 S and ARDEX X 77 W S. Dilute ARDEX P 51 1:3 with water.

ARDEX P 4

Ready Mixed, Multipurpose, Rapid Drying Primer for use on ceramic and porcelain tiles, concrete and terrazzo. ARDEX P 4 Primer is solvent free, and dries after 60 minutes. It is suitable for use in dry, damp or wet (not submerged) internal and external locations.

ARDEX P 82

Non-Flammable, Water-Based Synthetic Primer for use on smooth, impervious surfaces including existing ceramic tiling, internal asphalt, terrazzo, sound and well adhered paint coatings and old adhesive residues, prior to the use of ARDEX X 77 S and ARDEX X 77 W S.

GUIDANCE NOTES ON BACKGROUNDS TO BE TILED

Concrete

Allow at least 6 weeks, preferably at least 12 weeks drying time prior to fixing tiles onto new concrete. Mechanically prepare concrete and ensure mould oil and curing agents are removed.

Cement/sand render and screed

Wood float finish and prevent rapid drying of the surface for 3 days (renders) or 7 days (screeds). Allow render to air dry in good conditions for at least 2 weeks prior to tiling or at least 3 weeks for screeds prior to tiling.

Note for Screeds:

With an ARDEX A 38 cement/sand screed, tiles can be fixed after only 4 hours.

Note for Renders:

With ARDEX AM 100 Rapid Hardening One Coat Tile Render tiles can be fixed only 2 hours after application.

Gypsum Plaster

Do not use in wet or damp conditions. Gypsum plaster must be dry and at least 4 weeks old prior to tiling. Wire brush plaster to remove dust. Use ARDEX P 51 primer. Tiling weight should not exceed 20kg /m².

Plasterboard

Ensure boards are rigidly braced and adequately supported. Fix directly to the paper facing. Do not skim with plaster. Tiling weight should not exceed 32kg /m².

Wood-based sheets and boards

Prior to floor tiling, ensure that new or existing boards are dry i.e. conditioned to the environment in which they will be used, and are rigidly fixed, ventilated and free from barriers to adhesion. For timber floors ARDEX recommend the use of ARDEX S 27, ARDEX S 28 or ARDEX X 7001 adhesives and ARDEX P 51 Primer.

NOTE: BS 5385-1 advises that plywood and other wood-based sheets or boards should not be used for direct tiling to walls. Timber-based sheets or boards should be replaced or over sheeted with plasterboard, or suitable tile backer board.

Painted surfaces

ARDEX's advice is always to remove the painted finish to reveal a sound substrate without barriers to adhesion. Where the contractor deems the painted finish as sound, it should be primed with ARDEX P 82 primer before tiling with ARDEX X77S/WS commences. A trial application is recommended first. Internal, dry areas only.

Calcium Sulfate-based screeds i.e. Anhydrite

Ensure they have been laid and prepared in accordance with the manufacturers recommendations. Generally they require sanding and must have a moisture content of 0.5% or less measured using the carbide method. Prime with ARDEX P 51, diluted with 3 parts of water or dependent of the information from the gypsum screed manufacturer, a suitably sand blinded coat of an epoxy based primer such as ARDEX R 3 E may be required.

Existing glazed ceramic tiling

Ensure existing tiling is well adhered and can support the new tile bed. Thorough cleaning and rinsing off is essential. Prime tiles with ARDEX P 82 (Internal dry areas only), or ARDEX P 4 (external locations).

Asphalt sanded

With well adhered sand key no primer is required. Internal areas only. If sand key is poor or worn off, proceed as for smooth asphalt.

Asphalt smooth

Priming with ARDEX P 82 recommended. Internal dry areas.

Underfloor heating

ARDEX X 77 S and ARDEX X 77 W S are suitable for fixing ceramic tiles to concrete or cement and sand screeds with fully commissioned underfloor heating.

PACKAGING

ARDEX X 77 S and ARDEX X 77 W S are packed in paper sacks incorporating a polyethylene liner - net weight 20kg.

ARDEX X 77 S / ARDEX X 77 W S

MICROTEC Flexible Ultra Rapid Setting Wall and Floor Tile Adhesive

STORAGE AND SHELF LIFE

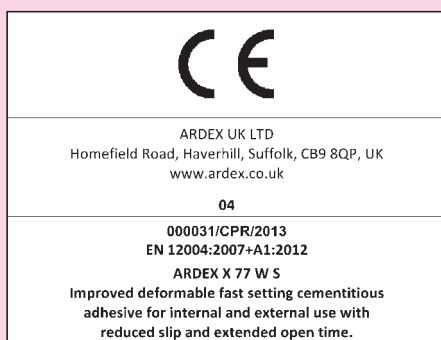
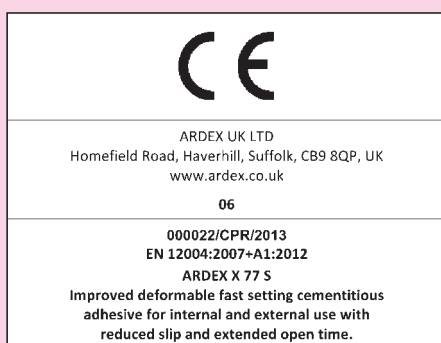
ARDEX X 77 S contains a reducing agent to control the level of Chromium VI when mixed prior to use. ARDEX X 77 S must be stored in unopened packaging, clear of the ground in cool dry conditions and protected from excessive draught. If stored correctly, as detailed above, and used within 6 months of the date shown on the packaging, the activity of the reducing agent (added to control the level of soluble Chromium VI) will be maintained and this product will contain, when mixed with water, no more than 0.0002% (2ppm) soluble Chromium VI of the total dry weight of the cement content of this product. Use of the product after the end of the declared storage period may increase the risk of allergic reaction.

ARDEX X 77 W S must be stored in unopened packaging, clear of the ground in cool dry conditions and be protected from excessive draught. If stored correctly, as detailed above, the shelf life of this product is 6 months from the date shown on the packaging.

ARDEX X 77 S and X 77 W S must not be used after the end of the declared storage period.

PRECAUTIONS

ARDEX X 77 S and X 77 W S contain more than 20% Portland cement and, therefore, in line with current legislation, is classified as irritating to eyes and skin. For this reason the following precautions should be observed:- Avoid contact with skin and eyes; in case of contact with the eyes, rinse immediately with plenty of water and seek medical advice; wear suitable gloves and keep the product out of the reach of children. Avoid generation of airborne dust during mixing.



TECHNICAL DATA

Bulk density of powder:	approximately 1.1kg/litre
Weight of fresh mortar:	approximately 1.6kg/litre
Working time (20°C):	approximately 30 minutes
Pot Life:	30 minutes
Fixing time (20°C):	approximately 30 minutes
Adjusting time (20°C):	approximately 15 minutes
Tensile Adhesion Strength:	Greater than 1 N/mm ²

PROPERTIES TESTED TO BS EN 12004

Open Time: approximately 20 minutes

Slip Resistance: Slip - less than 0.5mm

**Tensile Adhesion
Strength:**

At least 0.5 N/mm²
at 6 hours

PROPERTIES TESTED TO BS EN 12004

**Transverse
Deformation:**

Classification S1
(Deformation greater than
or equal to 2.5mm and
less than 5mm)

NOTE: For the latest technical or health and safety data on this product, consult the current technical or health and safety data sheet online at www.ardex.co.uk

NOTE: The information supplied in our literature or given by our employees is based upon extensive experience and, together with that supplied by our agents or distributors, is given in good faith in order to help you. Our Company policy is one of continuous Research and Development; we therefore reserve the right to update this information at any time without prior notice. We also guarantee the consistent high quality of our products; however, as we have no control over site conditions or the execution of the work, we accept no liability for any loss or damage which may arise as a result thereof.

Country specific recommendations, depending on local standards, codes of practice, building regulations or industry guidelines, may affect specific installation recommendations.

TECHNICAL ADVICE HELPLINE
01440 714939
ARDEX online: www.ardex.co.uk